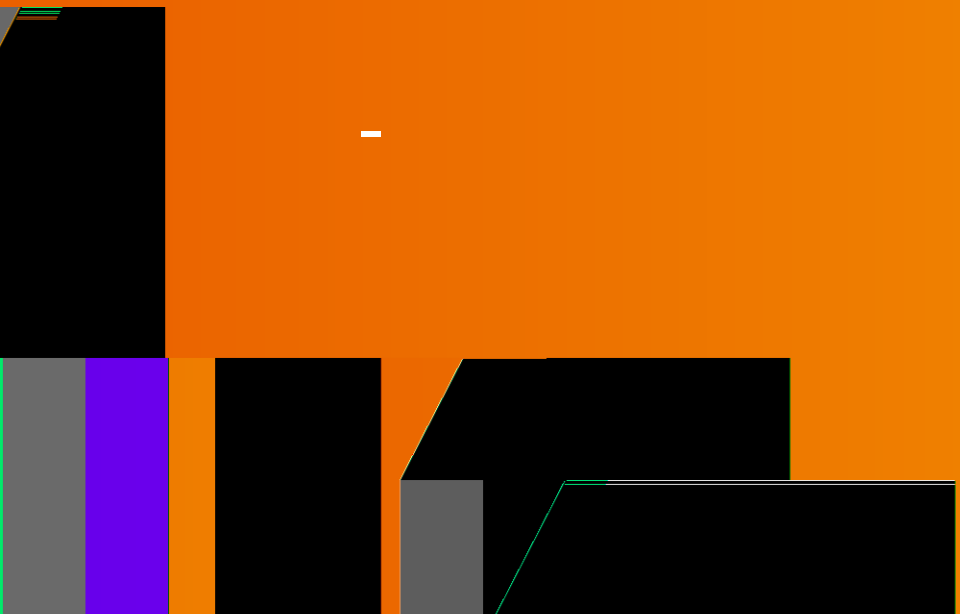


8







01



02



03



04



05



06



LME



Wind

✓

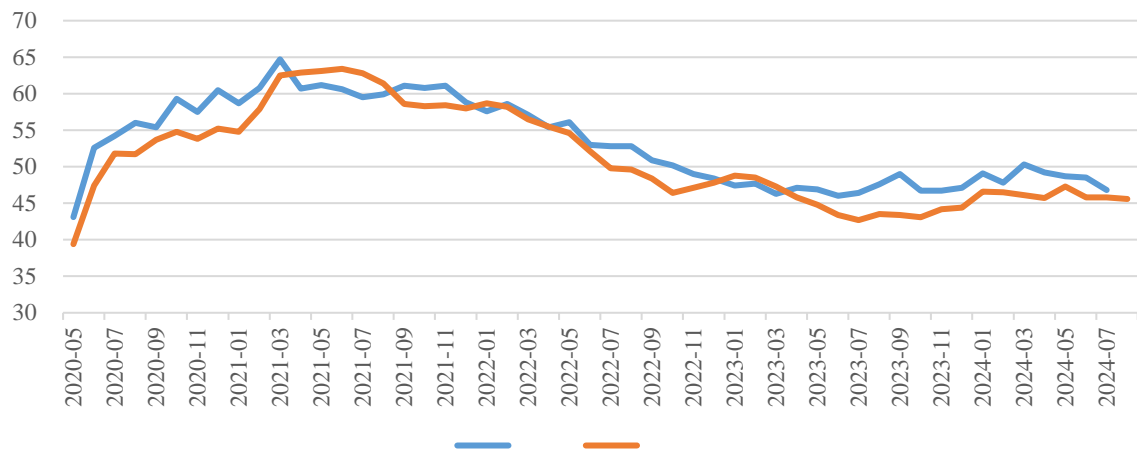
✓



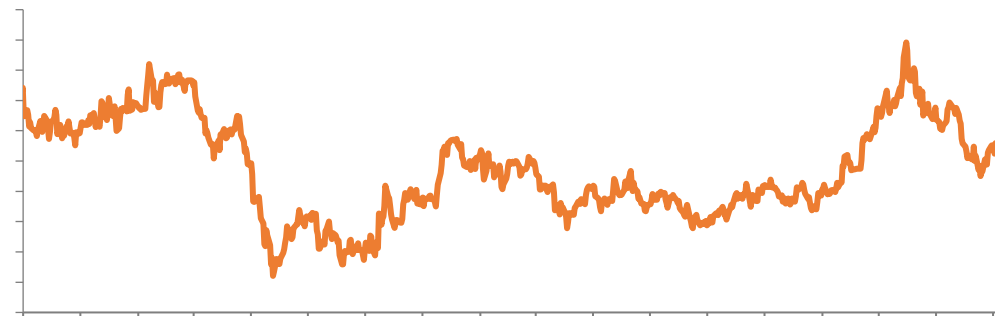


ISM

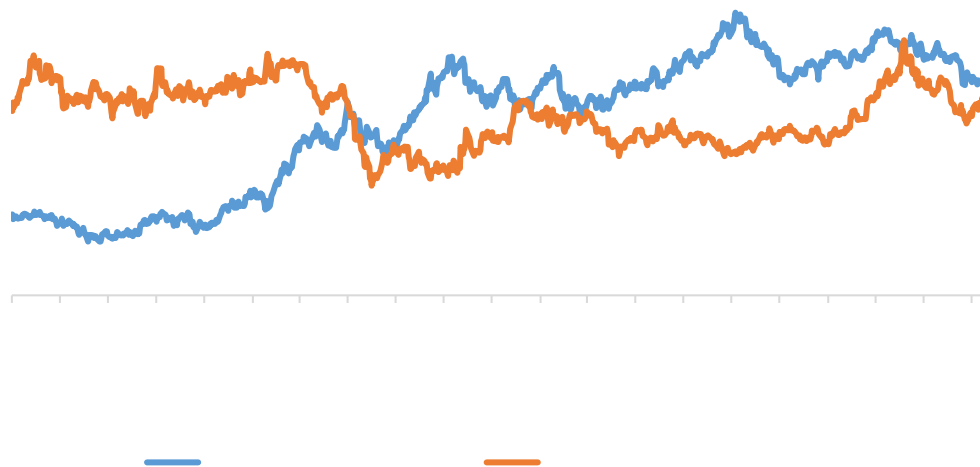
### PMI



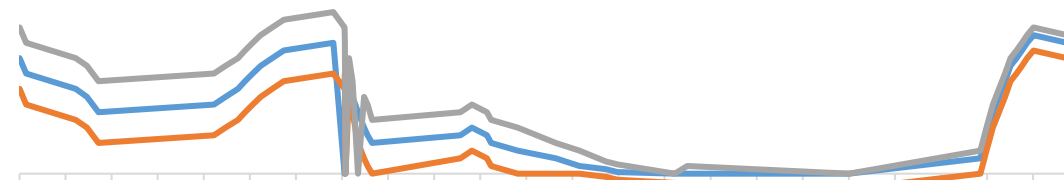
### LME



### 10

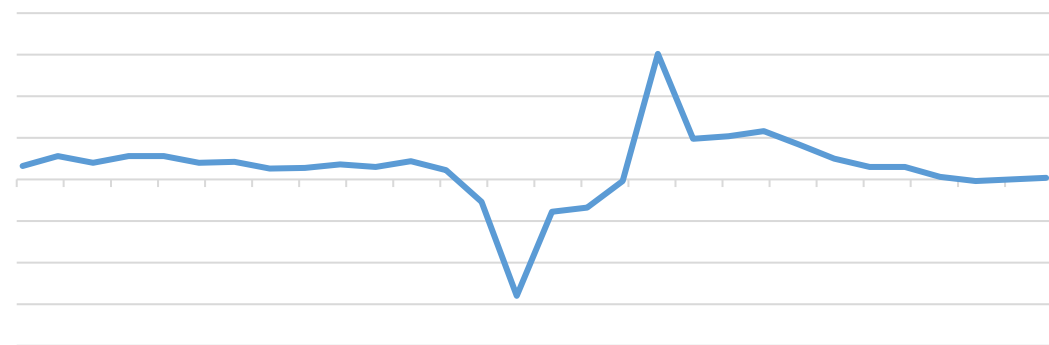
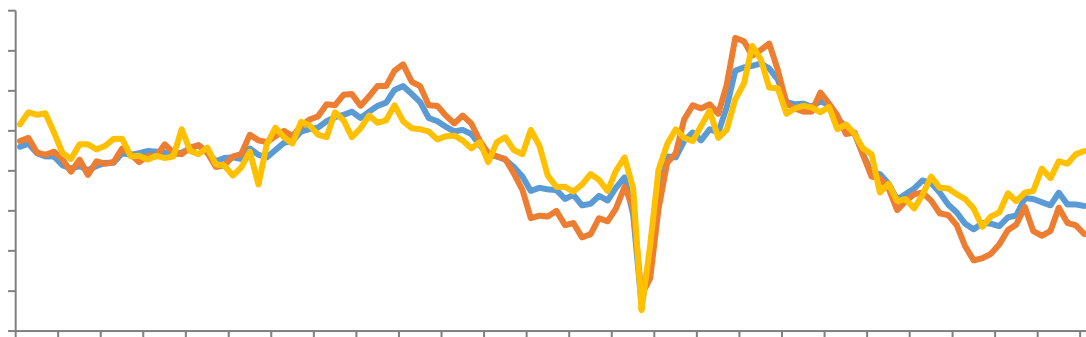




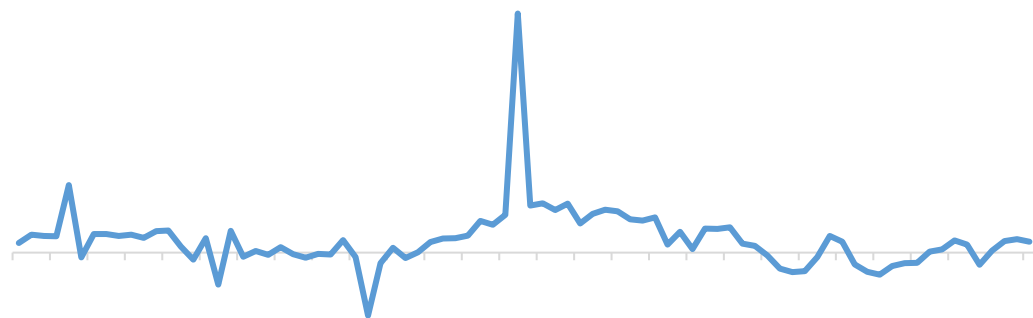


PMI

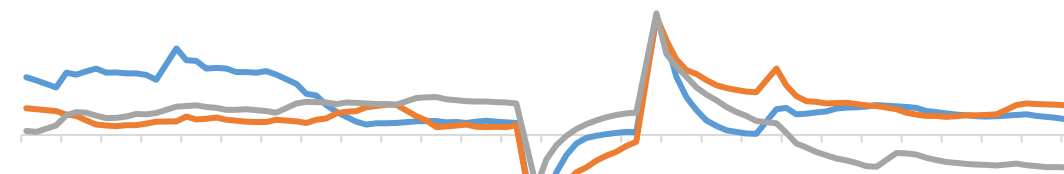
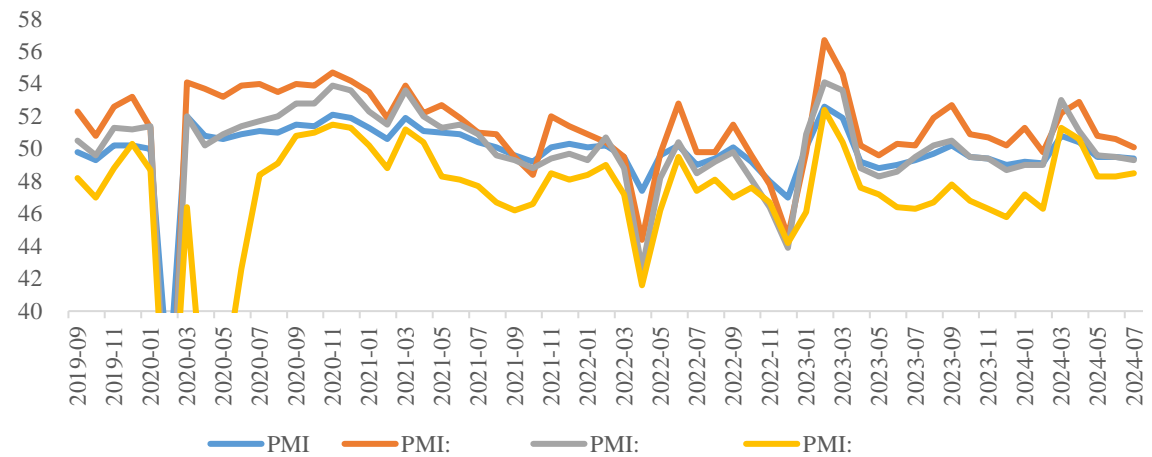
GDP



30 : :

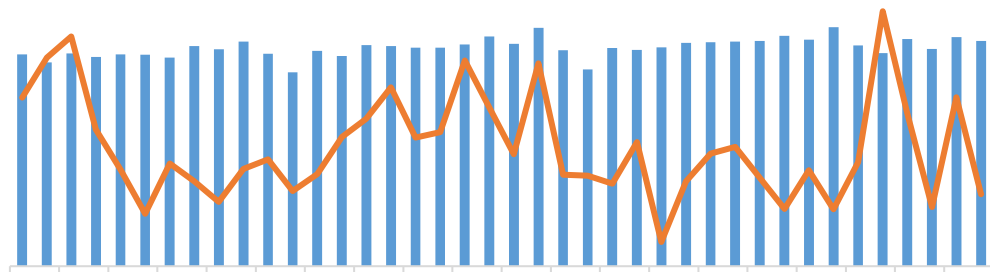


PMI





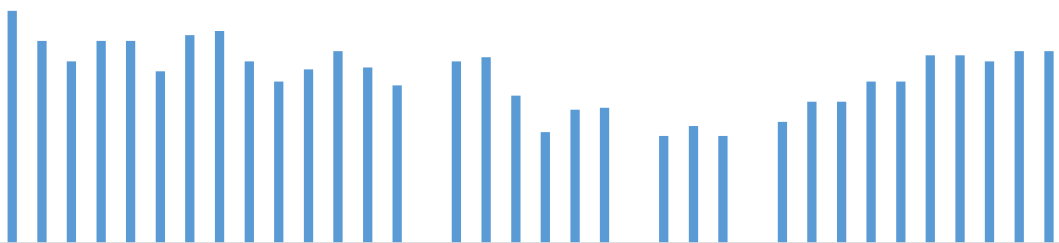
CSPT



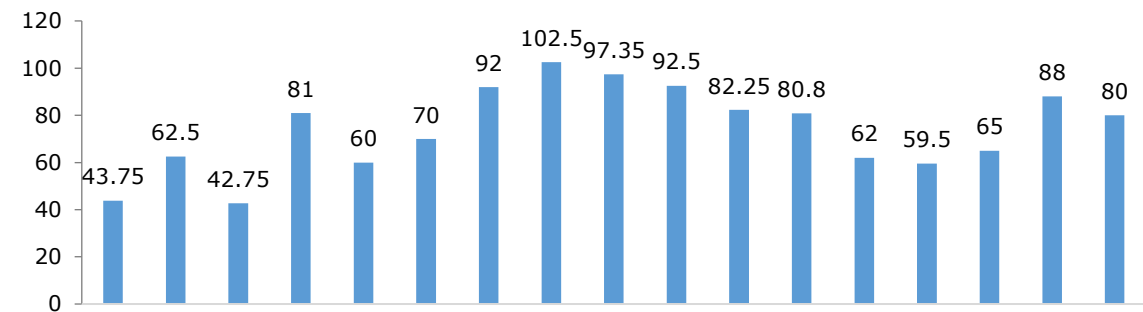
■

—

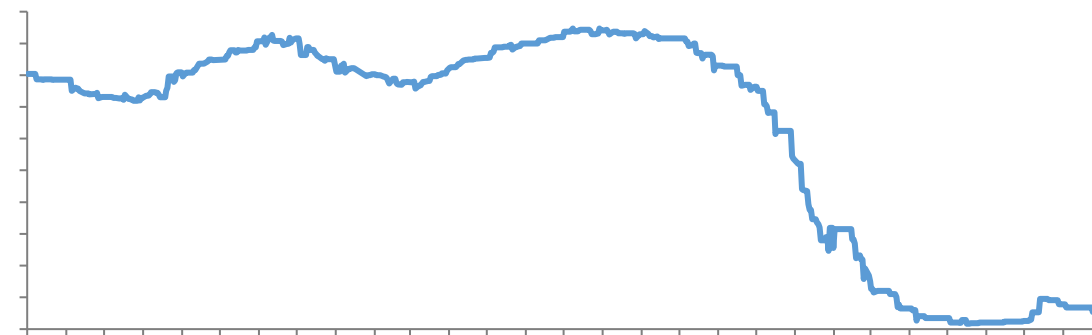
CSPT



TC



TC



1-7

+7.11% 7

102.8

+11.05%

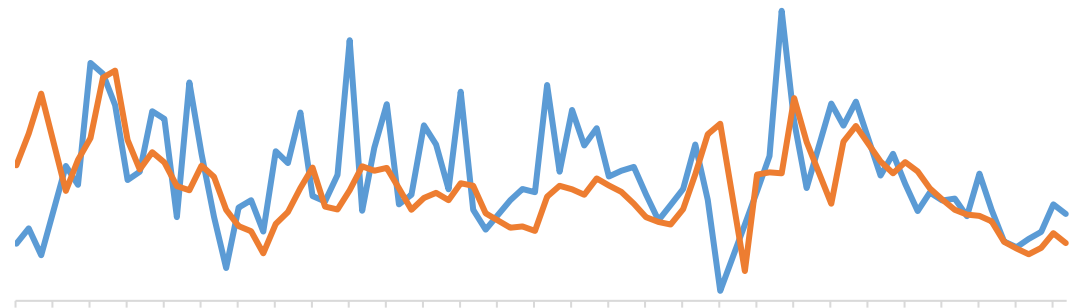
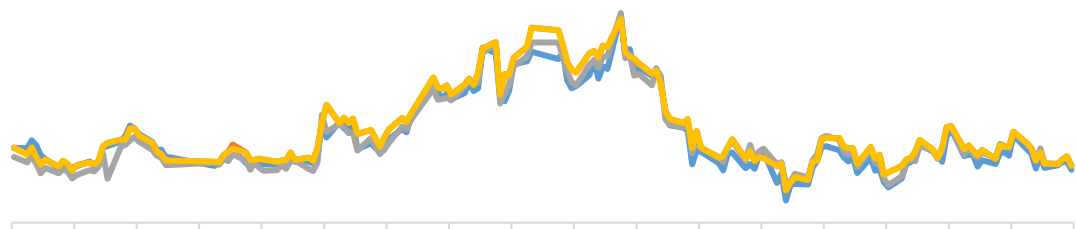


SMM



[Dark blue header bar]

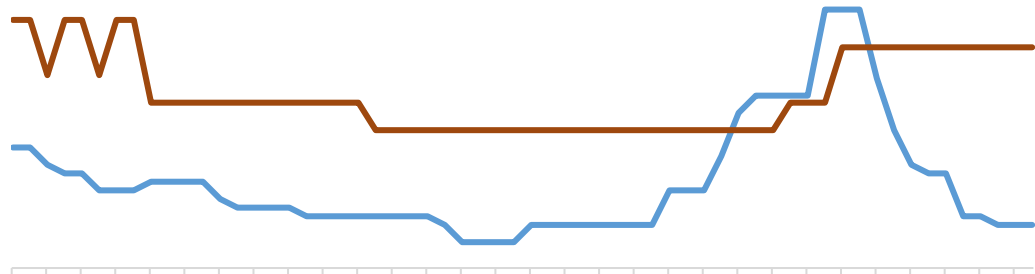
[Dark blue header bar]



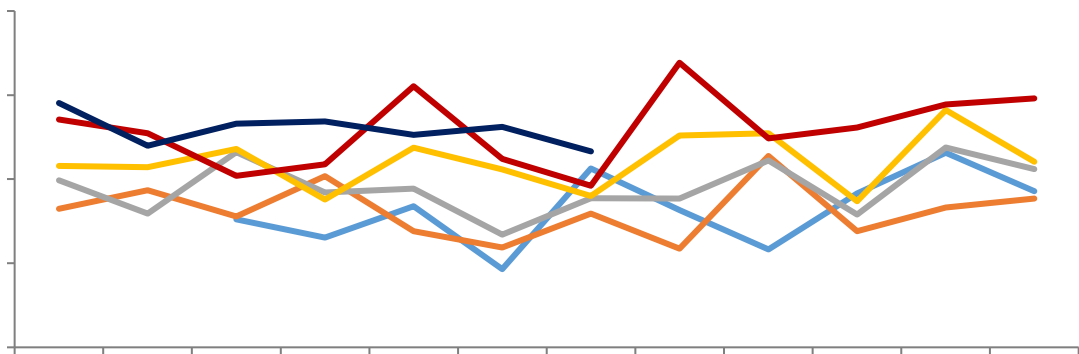
— —  
— —

— —

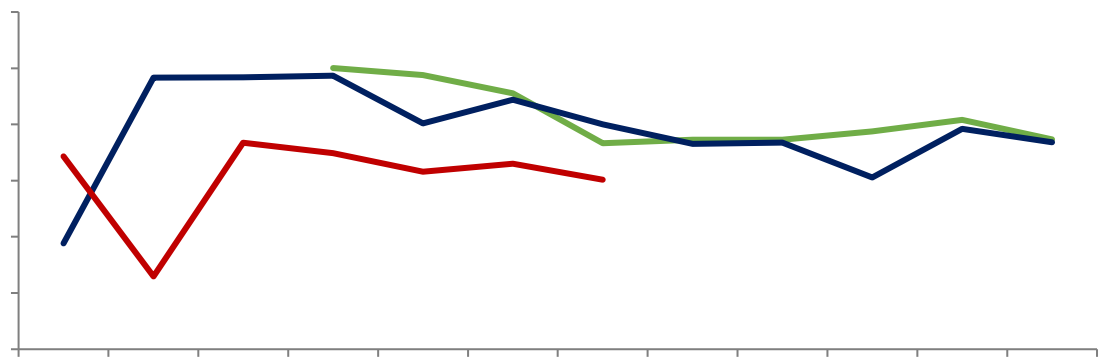
[Dark blue header bar]



—  
—

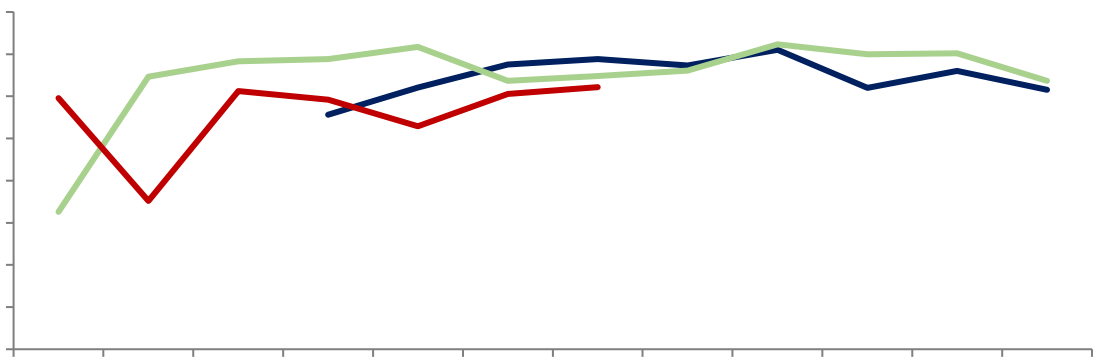


[Redacted Title]



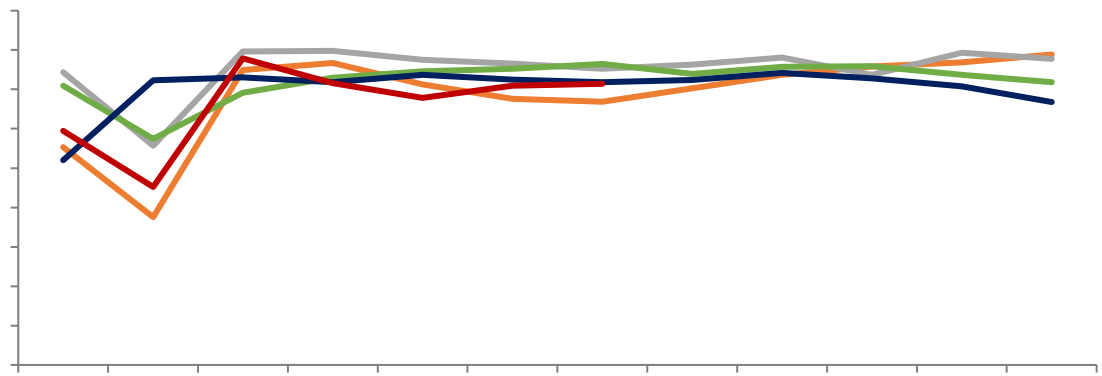
— — —

[Redacted Title]



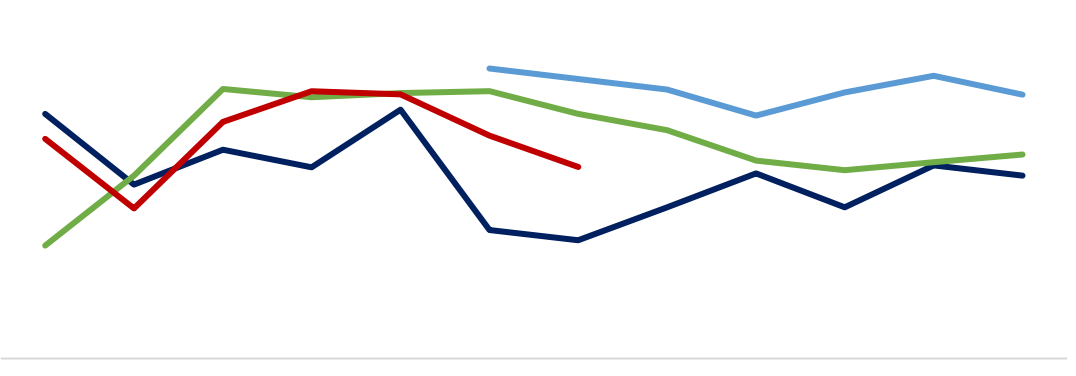
— — —

[Redacted Title]



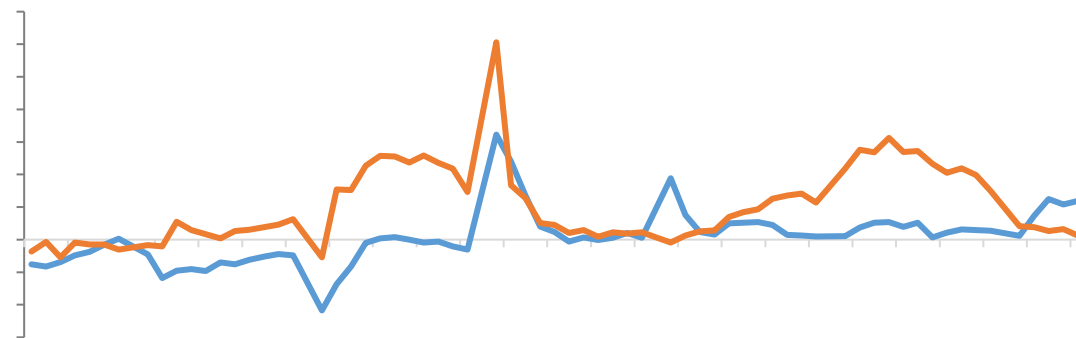
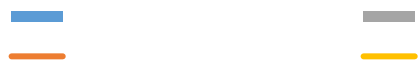
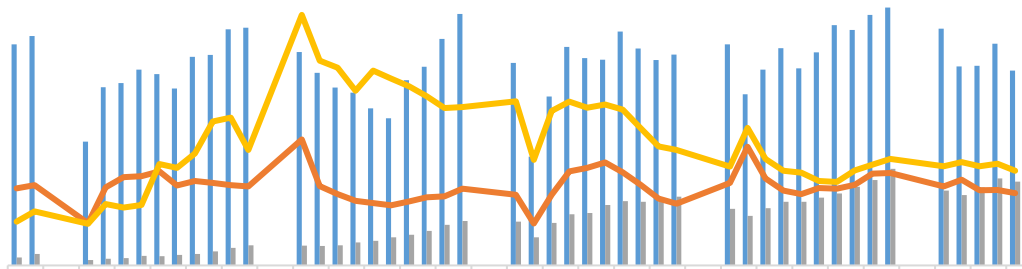
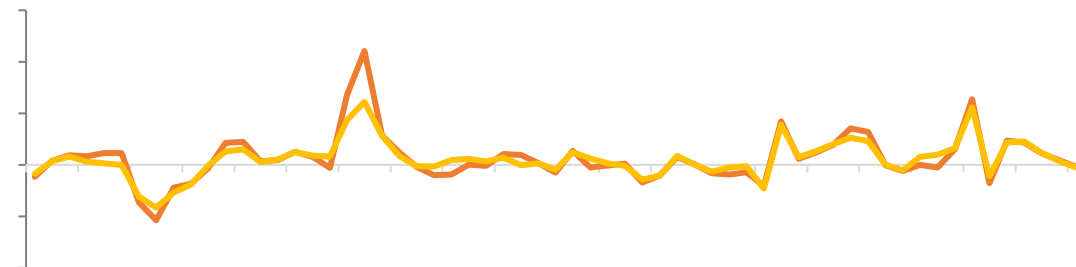
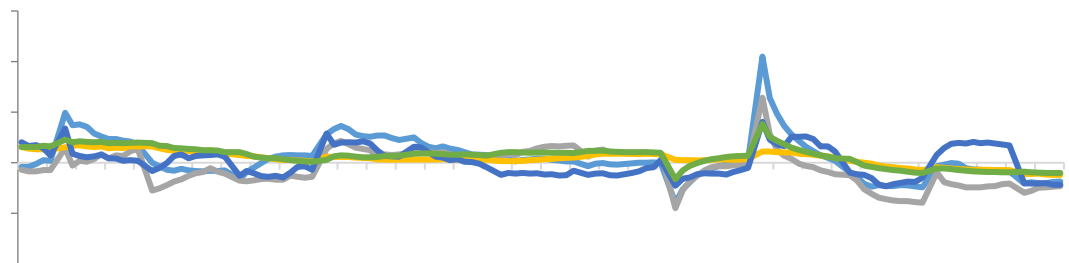
— — — — — —

[Redacted Title]



— — — —



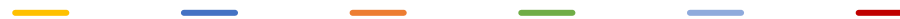
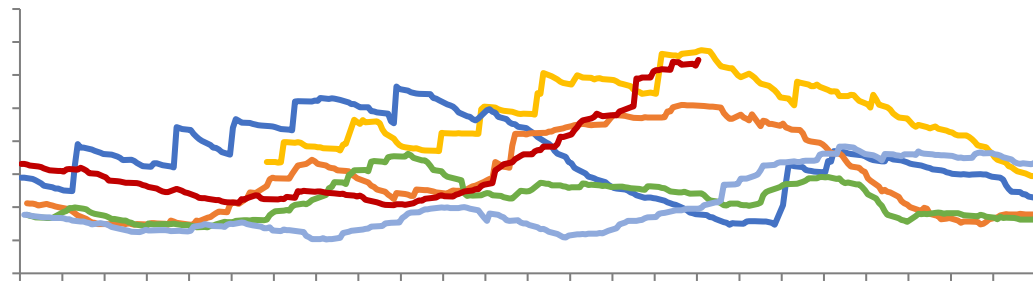




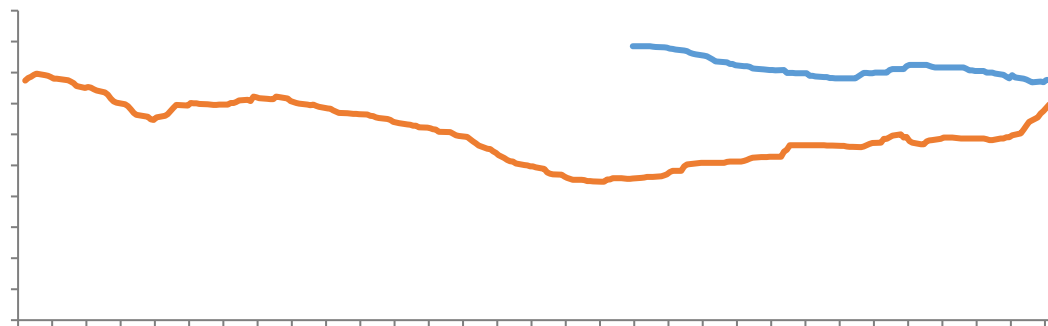
# LME COMEX

SHFE

LME



COMEX





# LME

-

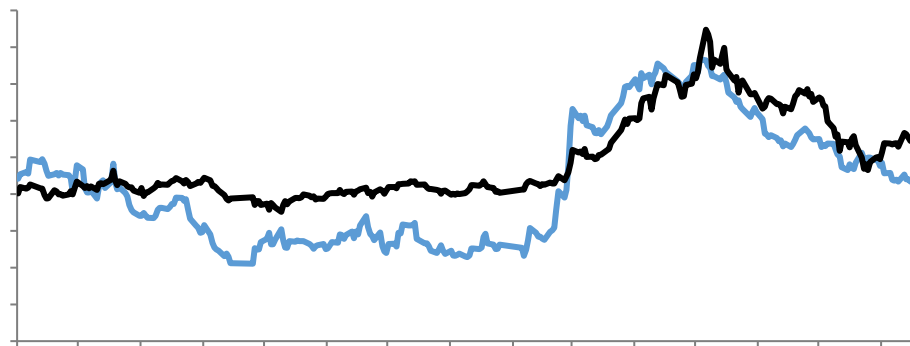
-

LME0-3



CFTC

LME







/



.

/

- ...

- - /4

. - - . - - - . -

021- 68905325 388 69 1 20 22 03A-3 04B	0571-89809624 111 2 1301	028-83279757 4 12 6 802	0757-88772666 28 2 2301 2302
0755-83533302 704A 705 A 57 2 3006	0757-83607028 2 1501B	0769-22900598 193 A 14 1401-9	0763-3808515 25 2 04 05 06
0758-2270761 1704 1705 2	010-63360528 24 1 - 5 32 101 12 1211	027-59219121 193 A 14 1401-9	0371-86533821 80 1 2 23 2301
0532-88910060 100 905	020-22836158 1 6	020-22836155 1 6	020-22836182 1 6
020-22836185 6 1	020-22836187 1 6	021-50390172 388 22 2201	

